

Work @ SIFT

Smart Information
Flow Technologies

<http://www.sift.net>

SIFT is looking for exceptional researchers at all levels from undergraduate interns to senior staff who are excited to work in a collaborative environment to conduct innovative research in the fields of Computer Science and Human Computer Interaction.

Computer Science

AI Planning, Autonomy, and Software Verification. Sample projects include:

- Probabilistic verification of system designs
- Autonomous spacecraft planning and control
- Formal verification of procedures for manned spacecraft
- Agent-based systems for cyber-security
- Mixed-initiative planning and control of UAV teams

You have experience with some or all of these:

- Common Lisp, Perl, Python, Java, C
- Formal methods for software verification
- AI planning methods (ideally both practical and theoretical experience)
- Constraint programming, constraint satisfaction and optimization
- Plan recognition
- AI scheduling techniques
- OR optimization techniques
- Control theory; optimization techniques, simulation
- Massive collaboration for problem solving, computer security, & communications



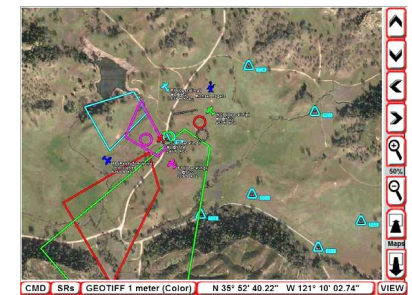
Human Computer Interaction

Improve interactions between humans and complex systems. Sample projects include:

- Cultural and interaction modeling and evaluation for development in serious games.
- Social network analysis
- Modeling and evaluation of socio-linguistic effects on task performance
- Neuro-cognitive techniques for evaluating

You have experience with some or all of these:

- Human-automation interaction design, UI design, theory, evaluation techniques
- Task and workload modeling
- Multiple resource theory, task and error analysis
- Linguistics, sociology, social psychology and/or anthropology as they apply to human interactions and cross cultural groups
- Neuro-physiological techniques
- Ability to implement UI designs in software
- Training/games simulation
- Military simulations and applications
- Experimental design, conduct and analysis



SIFT works with the
U.S. Department of Defense, NASA,
and industry
and academic partners.

SIFT employees say:
“You get more opportunity for real
involvement sooner at SIFT than at
bigger companies.”
“You get to spend more time working on
the technologies that excite you.”

World Class Research
Entrepreneurial Spirit
Innovative Environment

The SIFT logo is a purple arrow pointing to the right, with the word "SIFT" in white, bold, sans-serif font inside the arrow's shaft.

Minneapolis St. Paul, MN

- The Greater Minneapolis/St. Paul area has been ranked in **Money Magazine's top 10 US cities to live** every year from 2006-2010. It has all the advantages of a big city with a small town feel.
- We enjoy all four seasons. It gets cold in the winter, but the skiing's great, the streets get plowed, and people know how to drive.
- Our main office is located in the historic Warehouse District of downtown Minneapolis, a vibrant metropolis which offers a wide variety of activities and a friendly environment.



Want to learn
more? Contact us.

Established in 1999, SIFT, LLC is a growing small business headquartered in Minneapolis, MN, with twenty employees in 2010. We currently have satellite

offices in:
Boston, MA
Washington, DC
Seattle, WA
San Diego, CA

sift-jobs@Sift.net
211 N 1st St. Suite 300
Minneapolis, MN
55401
<http://www.sift.net>

We value the opportunity to work together with friendly, easygoing, creative researchers in a non-bureaucratic, flexible and responsive way.

sift-jobs@sift.net

SIFT researchers perform a variety of tasks ranging from requirements elicitation, design, implementation and testing to research, data analysis, proposal writing, and concept development. We seek colleagues who can:

- Develop new project ideas and market them to customers
- Assimilate ideas from research literature, expand and refine those ideas, and develop prototype software for demonstrations and experiments
- Lead small teams of highly skilled researchers

SIFT researchers have the opportunity to grow into securing and leading their own research and development programs.

SIFT offers work arrangements including telecommuting options and a flexible work schedule for meeting family needs.

Due to the nature of our contract work, positions at SIFT are generally limited to **US citizens or permanent residents**.

SIFT employees say:

"This is not only my best internship experience ever, it's the best I've ever heard of."